



# HOSPITALITY

## CONTENTS

Navigate through the brochure using the quick content links

OR ALTERNATIVELY

Scroll through the brochure using the navigation arrows below

Welcome to Southwell Racecourse .....

Seasons Restaurant .....

Seasons Restaurant Packages .....

Inclusive Drinks Packages .....

2026 Fixtures & Season Highlights .....

Ladies Day Intro .....

Ladies Day Packages .....

Ladies Day Packages .....

Annual Memberships & Race Sponsorship .....

More Than Just Racing .....

Finding Your Way Around .....



FOR HOSPITALITY ENQUIRIES



01889 562561  
(OPTION 1 , OPTION 2)



hospitality@southwell-racecourse.co.uk



01302 499732



events@southwell-racecourse.co.uk



NEXT





WELCOME TO

# SOUTHWELL RACECOURSE

With over seventy fixtures annually on both All-Weather and Turf tracks, we are among the country's busiest racecourses. Located in scenic rural Nottinghamshire, Southwell Racecourse offers a versatile 140-acre venue perfect for meetings, conferences, exhibitions, celebrations, and outdoor events. Our modern facilities cater to businesses and parties of any size.

Southwell Golf Club is located alongside the racecourse, with the front nine in the middle of the racecourse itself. The golf club is also ideal for groups to combine both golf and racing on team building events or to enjoy with clients and colleagues.



CORPORATE  
DAYS OUT



SPECIAL  
OCCASIONS



TEAM  
BUILDING



HEN & STAG  
PARTIES



BIRTHDAYS



NETWORKING

## HOW TO BOOK

### CALL OR E-MAIL US DIRECTLY

Prefer a personal touch? Our dedicated Sales Team will help you find the perfect package.

T: 01636 814481 (OPTION 1, OPTION 2)

E: [hospitality@southwell-racecourse.co.uk](mailto:hospitality@southwell-racecourse.co.uk)

### BOOK ONLINE WITH SEAT UNIQUE

View options in real-time and book whenever it suits you with our trusted hospitality partner, Seat Unique

BOOK  
HERE

AND GET READY  
TO EXPERIENCE  
AN EXCEPTIONAL  
DAY WITH US!



*I recently attended an event at Southwell Racecourse and was very impressed. The hospitality was excellent, with friendly, attentive staff. The facilities were comfortable, offering great views of the track. I look forward to returning.*



01889 562561  
(OPTION 1, OPTION 2)



[hospitality@southwell-racecourse.co.uk](mailto:hospitality@southwell-racecourse.co.uk)

FOR HOSPITALITY ENQUIRIES



01302 499732



[events@southwell-racecourse.co.uk](mailto:events@southwell-racecourse.co.uk)

FOR EVENTS AND VENUE HIRE ENQUIRIES



NEXT





A BEST SELLER

## SHERWOOD BISTRO AT SEASONS

A leisurely two-course dining experience combining great food with stunning views of the racecourse.

PRICES FROM **£49pp**

### PACKAGE INCLUDES:

- **Exclusive hospitality admission**  
Enjoy access to the Seasons.
- **Bistro two-course plated menu**  
Indulge in a carefully curated set menu with full table service.
- **Private table for the day**  
Relax in your own reserved space, with full access to all public areas of the racecourse.
- **Racecard**  
Stay in the know with all the details for an exciting race day experience.

UPGRADE TO OUR **GOLD PACKAGE** FROM ONLY **£14pp**

TO INCLUDE **THREE-COURSE SET MENU** AND **ARRIVAL DRINK** PLUS EVERYTHING INCLUDED IN THE SHERWOOD BISTRO

[BOOK HERE](#)

\*Available on selected dates. All prices include VAT

## PRIVATE DINING AT THE SEASONS RESTAURANT

Exclusive private dining within the elegant surroundings of Seasons Restaurant at Southwell Racecourse. Perfect for groups of 10 to 240 guests.

PRICES FROM **£75pp**

### PACKAGE INCLUDES:

- **Exclusive space for the day**  
Relax in your own private dining area, while also enjoying access to all public areas of the racecourse.
- **Seasonal three-course set menu**  
Savour a bistro three-course plated menu served to your table by our dedicated hospitality team.
- **Arrival drink**  
Kick off the day with a complimentary drink on arrival.
- **Racecard**  
Keep up with every runner, rider and race throughout the day.

[BOOK HERE](#)

\*Available on selected dates. All prices include VAT

### RESTAURANT DRINKS PACKAGES

*For moments of Celebration*

— NEW FOR 2026 —

#### SELECT PACKAGE

FROM **£39pp**

- A glass of classic Irroy Taittinger Champagne
- Half bottle of white or rosé and half bottle of red per person from a carefully selected range of house wines
- Half bottle of water per person (either still or sparkling)

#### CLASSIC PACKAGE

FROM **£29pp**

- Half bottle of white or rosé and half bottle of red per person from a carefully selected range of house wines
- Half bottle of water per person (either still or sparkling)

UPGRADE TO PREMIUM WINES FOR ONLY **£10pp**

ALL-INCLUSIVE DRINKS PACKAGES ALSO AVAILABLE



PREV



01889 562561  
(OPTION 1, OPTION 2)



hospitality@southwell-racecourse.co.uk

FOR HOSPITALITY ENQUIRIES



01302 499732



events@southwell-racecourse.co.uk

FOR EVENTS AND VENUE HIRE ENQUIRIES



NEXT





# SEASONS RESTAURANT PACKAGES

WITH ITS COMBINATION OF STUNNING VIEWS, EXCELLENT SERVICE,  
AND A RELAXED YET REFINED ATMOSPHERE, THE SEASONS RESTAURANT  
PROVIDES A PERFECT SETTING FOR A DAY AT THE RACES.

## PLATINUM PACKAGE

PRICES FROM

**£185pp\***

Hospitality Admission  
*(Full access to all areas)*

Inclusive Deluxe  
Drinks Package

Three-Course Meal

Cheeseboard

Full Table Service

Reserved Window Table  
*(Parade ring or trackside)*

Raceday Programme

## GOLD PACKAGE

PRICES FROM

**£99pp**

Hospitality Admission  
*(Full access to all areas)*

Arrival Drink

Three-Course Meal

Cream Tea

Full Table Service

Reserved Window Table  
*(Parade ring or trackside)*

Raceday Programme

[BOOK HERE](#)

\*Available on selected dates. All prices include VAT

## SILVER PACKAGE

PRICES FROM

**£79pp**

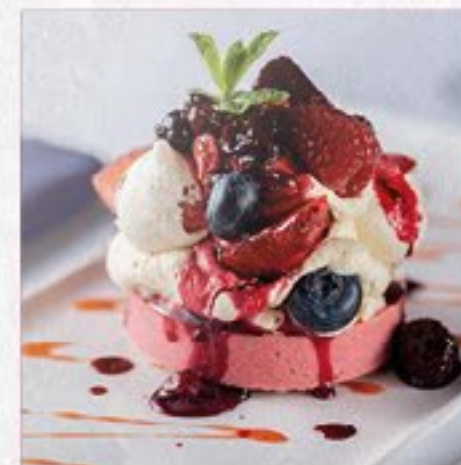
Hospitality Admission  
*(Full access to all areas)*

Three-Course Meal

Full Table Service

Reserved Table

Raceday Programme



## SAMPLE MENU

### AND THEY'RE OFF

#### PARSNIP SOUP

with croutons, curry oil and fresh parsley

#### CHICKEN LIVER PÂTÉ

with red onion chutney, sourdough croutes and roquette salad

#### PRAWN AND CRAYFISH COCKTAIL

with lumpfish caviar and crisp gem lettuce

### THE MAIN EVENT

#### PAN-FRIED CHICKEN SUPREME

with thyme roasted fondant potato with baby leeks,  
wilted greens and tarragon cream sauce

#### ROASTED BEEF SIRLOIN

with dauphinoise potato, carrot shard, kale and red wine jus

#### PAN SEARED COD SUPREME

with château potatoes and wilted spinach served with tomato,  
chorizo and white wine sauce

#### MUSHROOM RISOTTO

with toasted pine nuts, parmesan and truffle oil

### SWEET VICTORY

#### MASCARPONE TIRAMISU

with honey baked granola and chocolate caramel sauce

#### LEMON TART

with crushed meringue, raspberries, chantilly cream and coulis

#### PLANT-BASED CHERRY AND VANILLA INGOT

with berry compote

All our food is prepared in a kitchen where nuts, gluten & other allergens are present.  
Our menu descriptions do not include all ingredients. If you have a food allergy, please bring it to our  
attention before ordering. Some fish dishes may contain small bones.



PREV



01889 562561  
(OPTION 1 , OPTION 2)



hospitality@southwell-racecourse.co.uk

FOR HOSPITALITY ENQUIRIES



01302 499732



events@southwell-racecourse.co.uk

FOR EVENTS AND VENUE HIRE ENQUIRIES



NEXT





# CELEBRATE

*Racedays in Style*

WITH OUR INCLUSIVE DRINKS PACKAGES

## PLATINUM

FROM £89

### PREMIUM CHOICE

CLASSIC IRROY  
TAITTINGER  
CHAMPAGNE

SELECTION  
OF PREMIUM  
NAMED WINES  
Dead Man's Dice Malbec  
Medievo Reserva Rioja Cloud  
Island Sauvignon Blanc Petit  
Chablis Gautherin & Filles

SELECTION OF  
PREMIUM SPIRITS  
Tanqueray Gin | AU Vodka  
Johnnie Walker | Courvoisier  
Cuervo Gold | Jameson  
London Essence Mixers

SELECTION OF  
PACKAGED BEERS,  
ALES & CIDERS  
Estrella | Sol | Poretti  
Kopparberg Ciders  
Range of bottled ales

REFRESHING RANGE  
OF SOFT DRINKS

## DELUXE

FROM £69

### MOST POPULAR

REFRESHING  
PROSECCO

SELECTION OF  
PREMIUM SPIRITS  
Tanqueray Gin | AU Vodka  
Johnnie Walker | Courvoisier  
Cuervo Gold | Jameson  
London Essence Mixers

SELECTED RANGE  
OF HOUSE WINES  
Including Red, White & Rosé

SELECTION OF  
PACKAGED BEERS,  
ALES & CIDERS

REFRESHING RANGE  
OF SOFT DRINKS

## PREMIUM

FROM £49

### PERFECT FOR GROUPS

SELECTED RANGE  
OF HOUSE WINES  
Including Red, White & Rosé

SELECTION OF  
PACKAGED BEERS,  
ALES & CIDERS  
Excluding Guinness

REFRESHING RANGE  
OF SOFT DRINKS

## Party

FROM £39

TWO OF EACH OF  
THE FOLLOWING:

Estrella beers,  
Kopparberg fruit ciders,  
AU Vodka cans  
and Hooch

## Elevate YOUR CELEBRATION

NEW FOR 2026 SEASONAL  
FOOD AND DRINK EXTRAS

### BREAKFAST ROLLS

An early opening breakfast roll, ready on your table at the beginning of the day, with crisp bacon, fresh sausage, egg and your choice of sauces, with coffee and a selection of teas.

### FULL AFTERNOON TEA

A classic afternoon tea, warmed scones, clotted cream & jam, selection of miniature cakes, classic finger sandwiches, with coffee and a selection of teas.

### CREAM TEA

Light afternoon tea of warmed scones, clotted cream & jam, with coffee and a selection of teas.

### WARMED MINI PASTRIES

Selection of golden, bite-sized pastries served warm.

### SEASONAL CHEESEBOARD

With a selection of seasonal cheeses hand-picked by our friends at Cryer & Stott, served with a selection of crackers, finished with grapes, celery and chutney.

TIPSTER Exclusive expert tips & insider insights that add excitement and a winning edge.

FOR THE FULL LIST OF OUR SEASONAL OPTIONS CONTACT OUR SALES TEAM

## NEW FOR 2026 NO & LOW ALCOHOL FROM £49

PERFECT FOR  
NON-DRINKERS

CHILLED BOTTLES OF A SELECTION OF ALCOHOL-FREE FREIXENET  
Sparkling White, Rosé & Wolf Blass Shiraz red

SELECTION OF NON-ALCOHOLIC LAGERS, BEERS & CIDERS  
1664, Brooklyn Special Effects, Erdinger, Shipyard Low Tide, Kopparberg Mixed Fruit or Strawberry & Lime

HOUSE GORDON'S 0% GIN WITH TONICS & MIXERS

RANGE OF SOFT DRINKS  
Including Pepsi Max, Lemonade, J20, Still & Sparkling Water & Elderflower Cordial

WE ALSO HAVE RESTAURANT PACKAGES AVAILABLE  
*See our restaurant pages for full information.*

All packages are subject to availability. Should any item be unavailable, it will be substituted with a suitable alternative of similar quality and value.  
All packages available from gates opening to 30 minutes after the last race. All prices are per person and inclusive of VAT. All party must have the same package.  
Please note: at Music After Racing events, a £15pp supplement will apply.



PREV



01889 562561  
(OPTION 1, OPTION 2)



hospitality@southwell-racecourse.co.uk

FOR HOSPITALITY ENQUIRIES



01302 499732



events@southwell-racecourse.co.uk

FOR EVENTS AND VENUE HIRE ENQUIRIES



NEXT





# 2026 FIXTURE DATES

## JANUARY

Thu 1	New Year's Day Raceday	F
Sat 3 (E)	Floodlit	F
Tue 6 (E)	Floodlit	F
Fri 9	Afternoon	J
Tue 13 (E)	Floodlit	F
Sat 17 (E)	Floodlit	F
Tue 20 (E)	Floodlit	F
Thu 22	Afternoon	F
Fri 23 (E)	Floodlit	F
Fri 30	Afternoon	F

## FEBRUARY

Mon 2	Afternoon	J
Thu 5 (E)	Floodlit	F
Sat 7 (E)	Residents Racenight	F
Wed 11	Afternoon	F
Wed 18	Afternoon	J
Fri 20 (E)	Friday Night Live 🎵	F
Tue 24 (E)	Floodlit	F
Sat 28 (E)	Floodlit	F

## MARCH

Mon 2	Afternoon	J
Wed 4	Afternoon	F
Tue 10 (E)	Floodlit	F
Wed 11 (E)	Floodlit	F
Fri 13 (E)	Floodlit	F
Sat 14 (E)	Floodlit	F
Sat 21	Afternoon	F
Tue 24	Afternoon	J
Thu 26	Afternoon	F
Sat 28 (E)	Floodlit	F

## APRIL

Wed 1	Afternoon	J
Thu 2 (E)	Floodlit	F
Sun 5	Family Fun Raceday	F
Tue 7 (E)	Floodlit	F
Thu 9	Afternoon	F
Sat 11 (E)	Floodlit	F
Wed 15 (E)	Evening	F
Sat 25 (E)	Country & Western Racenight 🎵	F
Tue 28	Afternoon	F
Wed 29	Afternoon	F

## MAY

Mon 11	Afternoon	J
--------	-----------	---

## JUNE

Tue 2	Dog Friendly Raceday	J
Tue 9	Afternoon	J
Thu 18 (E)	FREE Race Evening	F

## JULY

Mon 27	Afternoon	F
--------	-----------	---

## AUGUST

Sun 16	Ladies Day ft DJ Marvin Humes 🎵	F
Thu 27 (E)	Evening	F
Mon 31	Family Fun Day	F

## SEPTEMBER

Thu 3 (E)	Evening	F
Tue 22 (E)	Floodlit	F
Sat 26 (E)	Floodlit	F

## OCTOBER

Thu 1	Afternoon	J
Sat 3 (E)	Oktoberfest 🎵	F
Tue 6 (E)	Floodlit	F
Sat 10 (E)	Oktoberfest 🎵	F
Tue 13	Afternoon	J
Sat 17 (E)	Floodlit	F
Mon 19 (E)	Floodlit	F
Thu 22 (E)	Floodlit	F
Sat 24 (E)	Gents Evening 🎵	F
Mon 26 (E)	Floodlit	F
Thu 29 (E)	Floodlit	F
Sat 31 (E)	Floodlit	F

## NOVEMBER

Mon 2	Afternoon	J
Thu 5 (E)	Floodlit	F
Sat 7 (E)	Floodlit	F
Fri 13	Afternoon	J
Tue 17 (E)	Floodlit	F
Tue 24	Afternoon	J
Fri 27 (E)	Floodlit	F
Sat 28 (E)	Winter Ladies Evening 🎵	F

## DECEMBER

Tue 1	Afternoon	J
Wed 2	Afternoon	F
Thu 3 (E)	Floodlit	F
Tue 8	Afternoon	F
Fri 11 (E)	Festive	F
Sun 13	Christmas Jumper Day	J
Wed 16	Festive	F
Fri 18	Festive 🎵	F
Mon 28 (E)	Festive	F

VIEW ONLINE

KEY **F** = All Weather Track **J** = Jumps Turf **Bold text** = Feature Day 🎵 = Live Music (E) = Evening

# SEASON HIGHLIGHTS



## FAMILY FUN DAYS

SUN 5 APR & MON 31 AUG

Great food, children's entertainment as well as thrilling racing. Don't forget children under 18 go FREE!



## Oktoberfest RACENIGHTS

SAT 3 OCT & SAT 10 OCT

Raise your steins and get ready for an unforgettable Oktoberfest Race Night! Experience thrilling racing, delicious bratwurst, and plenty of Bavarian cheer, it's the ultimate night out for everyone!

## Country & Western Racenight

SATURDAY 25 APRIL

Get your cowboy boots and stetsons on for a fantastic day with action packed flat racing and live music.



## GENTS EVENING

SATURDAY 24 OCTOBER

Join us for an evening of style, entertainment, thrilling racing and exciting prizes for the best dressed!

## Ladies DAY

SUNDAY 16 AUGUST

Ladies Day offers glamour, fashion, excitement, and unforgettable racing for a truly special experience.



## Christmas Jumper Raceday

SUNDAY 13 DECEMBER

Dig out your favourite Christmas Jumper and join us for a day of racing to start the festivities!

FOR HOSPITALITY ENQUIRIES



01889 562561  
(OPTION 1, OPTION 2)



hospitality@southwell-racecourse.co.uk

FOR EVENTS AND VENUE HIRE ENQUIRIES



01302 499732



events@southwell-racecourse.co.uk



NEXT







# LADIES DAY

SUNDAY 16 AUGUST

## THE HIGHLIGHT OF SOUTHWELL'S CALENDAR

Ladies Day offers thrilling racing, an electric atmosphere, sensational style, and fantastic post-racing entertainment featuring a **live DJ set from Marvin Humes**. It's the ultimate day out with the girls!

Fashion takes centre stage alongside the races, with stylish outfits and stunning headwear in abundance. Thousands of racegoers will step out in their finest, with the popular Style Awards offering a chance to win a £500 cash prize for the best outfit.

Gather your friends, dress to impress, and enjoy an unforgettable day as summer comes to a close. This year's Ladies Day, is one not to be missed.

FIND OUT MORE



# TRACKSIDE VIP LAWN

IMMERSE IN A RELAXED  
ATMOSPHERE ON A PRIVATE  
TABLE FOR YOU AND YOUR GUESTS,  
WHERE YOU WILL BE ABLE TO  
SOAK UP THE SUNSHINE AND  
ENJOY THE DAY'S RACING.

PRICES FROM £160PP

## PACKAGE INCLUDES:

- Admission ticket
- Racecard
- Reserved seating for the day and access to a private bar
- Individual afternoon picnic box
- Pimms on arrival



BOOK HERE

*Plases note: no picnics are permitted.  
Available to a minimum of 4 guests.*



01889 562561  
(OPTION 1 , OPTION 2)



hospitality@southwell-racecourse.co.uk

FOR HOSPITALITY ENQUIRIES



01302 499732



events@southwell-racecourse.co.uk

FOR EVENTS AND VENUE HIRE ENQUIRIES



NEXT







## SEASONS RESTAURANT

ENJOY A BIRDS EYE VIEW OF THE TRACK AND CULINARY DELIGHTS IN THE SPLENDOUR OF OUR SEASONS RESTAURANT

PRICES FROM £220PP

### PACKAGE INCLUDES:

- Welcome host & prosecco reception
- Hospitality admission badge & racecard
- Private table for the whole fixture with dedicated service throughout
- Three-course choice fine dining menu prepared by our experienced chefs
- Afternoon tea, including a selection of sandwiches and cakes

ENJOY AN INCLUSIVE BAR INCLUDING PROSECCO, SPIRITS, HOUSE WINES, BEERS, CIDERS AND SOFT DRINKS FROM £300PP

BOOK HERE

*All prices include VAT*



## WINNING POST RESTAURANT

PRICES FROM £200PP

Experience unparalleled dining in the Winning Post Restaurant. Nestled in the centre of the course, this exquisite facility offers breathtaking views of the final straight.

### PACKAGE INCLUDES:

- Admission ticket
- Glass of fizz on arrival
- Three-course set menu
- Afternoon tea
- Tipster talk before racing
- Dedicated betting facilities
- Private table for the day
- Racecard



## WINNING POST CHALET

PRICES FROM £240PP

The private chalets offer fantastic comfort, and are fully equipped with TV screens and a bar with a private garden area with furniture for your guests. Situated in the centre course right on the winning line.

### PACKAGE INCLUDES:

- Admission ticket
- Glass of fizz on arrival
- Three-course set menu
- Afternoon tea
- Tipster talk before racing
- Private bar for the day
- Dedicated betting facilities
- Racecard

*\*Minimum of 20 guests*



01889 562561  
(OPTION 1, OPTION 2)



hospitality@southwell-racecourse.co.uk



01302 499732



events@southwell-racecourse.co.uk



NEXT



FOR HOSPITALITY ENQUIRIES

FOR EVENTS AND VENUE HIRE ENQUIRIES





## VIP LAWN\*

PRICES FROM £150PP

Based in a prime location in front of the Grandstand, on its own private lawn, which offers second-to-none views of the track.

**PACKAGE INCLUDES:**

- Admission ticket
- Individual afternoon picnic box
- Guaranteed reserved seating for the day
- Half bottle of prosecco per person
- Access to a private bar
- Racecard

\*Minimum 4 guests.



## PIZZA & PROSECCO

PRICES FROM £75PP

Join us for an unforgettable day, enjoying outdoor space perfect for enjoying delicious free-flowing drinks and great company.

**PACKAGE INCLUDES:**

- Admission ticket and raceday programme
- Reserved table for the day on the pagoda lawn non-track facing
- Glass of chilled Prosecco or bottle of Poretti
- Convenient bar and BritBet betting facilities
- Rustic Pizza
- Access to all public areas to soak up the atmosphere



### AFTERNOON PICNIC PACKAGE

PRICES FROM  
£67PP

Leave the catering to us, pick up your picnic box, find a sunny spot and enjoy the thrills of the day. Package includes Grandstand admission and picnic box



## THE PADDOCK CLUB

PRICES FROM £90PP

Get ready for a day of elegance, excitement and exclusivity in The Paddock Club. With its stretched tent and festival feel, it is the perfect venue for your social catch-up with friends.

**PACKAGE INCLUDES:**

- Admission ticket
- Complimentary food voucher street style food vendor
- Arrival drink
- Dedicated betting services
- Private bar
- Private toilet facilities
- Guaranteed seating not individually reserved
- Racecard

## TRACKSIDE LAWN

PRICES FROM £125PP

Experience a day of elegance, excitement and exclusivity. With its prime trackside position, you will be perfectly placed to soak up the electric raceday atmosphere.

**PACKAGE INCLUDES:**

- Admission ticket
- Private draught bar
- Complimentary drink pint, house wine or spirit & mixer
- Guaranteed seating
- Food voucher street style food vendor
- Racecard

Please note: no picnics are permitted within trackside lawn



01889 562561  
(OPTION 1, OPTION 2)



hospitality@southwell-racecourse.co.uk



01302 499732



events@southwell-racecourse.co.uk



NEXT





# Unlock the BEST VALUE IN RACING

CHOOSE FROM

FULL ANNUAL MEMBERSHIP	CORPORATE MEMBERSHIP	U25 MEMBERSHIP	U21 MEMBERSHIP
FROM £400	FROM £800	FROM £149	FROM £99



VIEW ONLINE

BY BECOMING AN ANNUAL MEMBER AT SOUTHWELL RACECOURSE YOU'LL ENJOY FREE ENTRY THROUGHOUT THE YEAR, ALONG WITH A WIDE RANGE OF EXCLUSIVE BENEFITS

FULL ANNUAL MEMBERS RECEIVE ALL OF THE BELOW, PLUS EXTRAS ALONG THE WAY:

- ✓ Entry to every Southwell Racecourse fixture plus access to the Annual Member's lounge
- ✓ Entry to 500+ fixtures across Arena Racing Company and Greyhound stadiums
- ✓ 20% discount on selected food and drink outlets
- ✓ Free racecard
- ✓ Free guest passes
- ✓ Discounts in the restaurants

PERFECT TO REWARD STAFF

## RACE SPONSORSHIP

RACE SPONSORSHIP IS A GREAT WAY TO PROMOTE YOUR COMPANY FOR BRAND POSITIONING, PRODUCT LAUNCHES AND NETWORKING OR FOR CELEBRATING A SPECIAL OCCASION AMONGST FRIENDS, FAMILY OR EMPLOYEES.

PRICES FROM **£500** +VAT

BECOME PART OF THE DAY WITH THIS PACKAGE:

- Naming rights
- On-the-ground promotion
- Advertising throughout the racecourse
- Complimentary Grandstand Badges
- Naming rights to a race E.g. The Bramley Handicap Stakes
- Prize presentations to winner and Best Turned Out with photo opportunities
- Racecard advert

FIND OUT MORE



01889 562561  
(OPTION 1, OPTION 2)



hospitality@southwell-racecourse.co.uk



01302 499732



events@southwell-racecourse.co.uk



NEXT



FOR HOSPITALITY ENQUIRIES

FOR EVENTS AND VENUE HIRE ENQUIRIES



# MORE THAN JUST RACING



## 140

### ACRES OF OUTDOOR SPACE

Perfect for festivals,  
team building events  
and family fun days



## 5+

### CONFERENCE & EVENT SPACES



## 1500

### FREE CAR PARKING SPACES



### CONVENIENTLY LOCATED

Easily accessible from Newark,  
Mansfield and Nottingham

ENQUIRE HERE



## CONFERENCES & MEETINGS

With a range of event spaces and stunning views, we offer the perfect setting for conferences and professional gatherings. Whether you need a smaller space for up to 30 people, or a large suite for up to 250 delegates, our newly refurbished rooms offer modern, light, comfortable surrounding, ensuring a productive and memorable experience for all attendees.



## EXHIBITIONS & FAIRS

Our venue is ideal for a wide range of corporate events. From product launches and trade shows to team-building activities and large-scale functions, we provide expansive indoor spaces and scenic outdoor areas to suit any occasion.



## PARTIES & CELEBRATIONS

Whatever you are planning, we have a range of suites available in beautifully designed surroundings. Our delicious and diverse menus, from finger buffets to formal dining, cater to every need. With friendly, attentive staff and flexible packages to suit all requirements and budgets, we guarantee a memorable experience for you and your guests.



## LARGE SCALE EVENTS

With 140 acres of space and the infrastructure and support to add stages, sound, gated entrances and power, this space is ideal for a vast array of large-scale events. Whether you're holding a food festival, car show or even an adrenaline-packed day of zorbing or hoverboarding, we have the blank canvas on which to create it.



01889 562561  
(OPTION 1, OPTION 2)



hospitality@southwell-racecourse.co.uk

FOR HOSPITALITY ENQUIRIES



01302 499732



events@southwell-racecourse.co.uk

FOR EVENTS AND VENUE HIRE ENQUIRIES



NEXT







# FINDING YOUR WAY AROUND

- 1

Car Park B  
Owners & Trainers, Disabled & Hospitality
- 2

Stable Yard
- 3

Racecourse Office
- 4

General Enclosure, Owners & Trainers, Hospitality Entrance
- 5

Minster Suite
- 6

Saddling Boxes
- 7

Emergency Exit
- 8

Pre-Parade Ring
- 9

Horse Walk
- 10

Stable Staff Facilities
- 11

Weighing Room
- 12

Winners Enclosure
- 13

Seasons Restaurant
- 14

Parade Ring
- 15

Betting Hall & Bars
- 16

Owners & Trainers Suite
- 17

Car Park A – Public
- 18

Picnic Area
- 19

Grandstand Hall
- 20

First Aid
- 21

General Enclosure Entrance
- 22

Betting Ring
- 23

First Floor Access (with lift)  
Access to Minster Suite, Seasons Restaurant, Owners & Trainers Suite
- 24

Syndicates Lounge

# FACILITIES

- +

First Aid Point
- ♿

Accessible Viewing Platform
- i

Information
- ♿

Toilets
- 👶

Baby Changing Facilities
- ♿

Accessible Toilets

# DIRECTIONS

Southwell Racecourse  
Occupation Lane  
Rolleston  
Nottinghamshire  
NG25 0FT

# BY CAR

The best postcode for Sat-Nav users attempting to reach Racecourse Road is NG25 0FT. From the M1 south: Leave the M1 at Junction 21A and join the A46 towards Newark. Continue on the A46 to Newark, on approaching the roundabout junction with the B6166 take the first exit still on the A46. At the next roundabout take the first exit onto the A617 towards Mansfield and Southwell. On approaching Southwell turn left onto Racecourse Lane and drive for 2 miles.

From the A1: Continue on the A1 to the Newark junction with the A46. Join the A46 towards Nottingham, at the roundabout take the third exit onto the A617 towards Mansfield and Southwell. Turn left onto the A612 signposted Southwell. On approaching Southwell turn left onto Racecourse Lane and drive for 2 miles.

Due to local authority restrictions, Occupation Lane and Station Road in Rolleston cannot be used as a means of access for Sunday and all Floodlight race meetings, so please follow the yellow diversion signs.

# BY TRAIN

The nearest station is Rolleston which is adjacent to the course. Rolleston Train Station lies on the Nottingham to Lincoln line. If you arrive at Newark Station, then it is about a 9 mile journey to Racecourse Road, Southwell. The operator East Midlands Trains run additional train services calling at Rolleston on racedays in line with our first and last race times, for more details on the scheduled times please go to: [eastmidlandstrains.co.uk](http://eastmidlandstrains.co.uk). On Ladies Day, there are extra trains stopping at Rolleston.

GOOGLE MAPS



01889 562561  
(OPTION 1 , OPTION 2)



[hospitality@southwell-racecourse.co.uk](mailto:hospitality@southwell-racecourse.co.uk)



01302 499732



[events@southwell-racecourse.co.uk](mailto:events@southwell-racecourse.co.uk)



FOR HOSPITALITY ENQUIRIES

FOR EVENTS AND VENUE HIRE ENQUIRIES





## SOUTHWELL RACECOURSE

OCCUPATION LANE • ROLLESTON • NOTTINGHAMSHIRE • NG25 0FT

TEL 01636 814481 EMAIL [hospitality@southwell-racecourse.co.uk](mailto:hospitality@southwell-racecourse.co.uk)

**SEAT UNIQUE** Our official online hospitality partner

CLICK HERE TO BOOK  
**HOSPITALITY & RESTAURANTS**



01889 562561  
(OPTION 1 , OPTION 2)



[hospitality@southwell-racecourse.co.uk](mailto:hospitality@southwell-racecourse.co.uk)



01302 499732



[events@southwell-racecourse.co.uk](mailto:events@southwell-racecourse.co.uk)

